



## 2815 COMPARISON



### FLOW DIFFERENCES

Valve	2850		2815	
	Bypass	No Bypass	Bypass	No Bypass
Piston				
Continuous (15 psi drop)	46	42	70	
Peak (25 psi drop)	60	55	90	
Cv (flow @ 1 psi drop)	12	11	18	
Max. Backwash (25 psi drop)	47	47	70	

### DIMENSIONAL DIFFERENCES

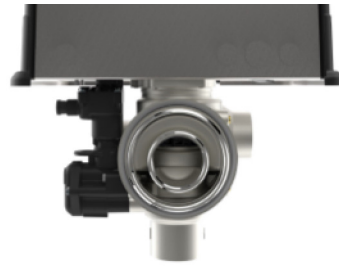
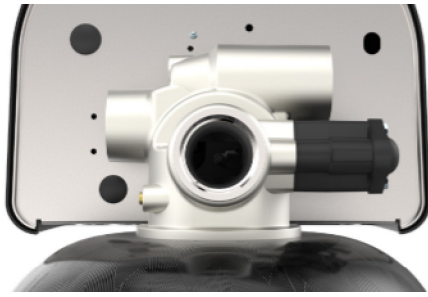
#### Tank/Valve to Centerline of Each Port

Valve Port	2850 Valve Body		2815 Valve Body	
	inches	mm	inches	mm
Inlet	1.74	44.20	2.25	57.15
Outlet	2.69	68.33	3.20	81.28
Drain	3.28	83.31	4.43	112.51

#### Estimated Position Thread Start of the 4" Base

4" Base	2850	2815
	6 o'clock	7 o'clock





VALVE SPECIFICATION DIFFERENCES		
Part	2850	2815
Material	Lead Free Brass	316 Stainless
Distributor Pilot	1.9" O.D. (48.3 mm)	1.9" O.D. (48.3
Drain Line	1.0" NPTM External Flow Control	1.5" NPTI Internal Flow C
Inlet/Outlet	1.5" NPTF	1.5" NPTI
Test Ports	Treated - Option Top of Valve Body	Treated & F Side of Valve
Brine Line	3/8" or 1/2"	1/2"
Mounting Base	4" - 8 UN	4" - 8 UN
Height from Top of Tank	6.5" (165 mm)	8.75" (222 mm)
Distributor Height	Flush with top of tank $\pm$ .25"	Flush with top of t





13845 BISHOPS DR., SUITE 200, BROOKFIELD, WI 53005 USA

P. 2 2.238.4400 | WATERPURIFICATION.PENTAIR.COM | CUSTOMER CARE: 800.2 . 404 |

© 2018 P R F , LLC. A

§For a detailed list of where Pentair trademarks are registered, please visit [waterpurification.pentair.com/brands](http://waterpurification.pentair.com/brands). Pentair trademarks and logos are owned by Pentair plc or its affiliates. Third party registered and unregistered trademarks and logos are the property of their respective owners.

4005211 Rev A JE18