

# CONTROLLERS



## XTR2

- ◆ Premium touch screen LCD display
- ◆ Upgraded interface
- ◆ Customizable programming
- ◆ Field programmable



## SXT

- ◆ Large LCD display
- ◆ Programmable time clock or metered
- ◆ Applicable to filter or softener systems



## ELECTROMECHANICAL

- ◆ Quick access to all internal components
- ◆ 24V motor
- ◆ Applicable to filter or softener systems



TESTED and CERTIFIED by the  
WQA to NSF/ANSI Standard 61  
Section 8 Material Safety Only.



TESTED and CERTIFIED by the  
WQA to NSF/ANSI Standard  
372 for Lead Free Compliance.



13845 BISHOPS DR., SUITE 200, BROOKFIELD, WI 53005 USA  
P: 262.238.4400 | [WATERPURIFICATION.PENTAIR.COM](http://WATERPURIFICATION.PENTAIR.COM)  
CUSTOMER CARE: 800.279.9404 | [tech-support@pentair.com](mailto:tech-support@pentair.com)  
© 2018 Pentair Residential Filtration, LLC. All rights reserved.  
§For a detailed list of where Pentair trademarks are registered,  
please visit [waterpurification.pentair.com/brands](http://waterpurification.pentair.com/brands). Pentair  
trademarks and logos are owned by Pentair plc or its affiliates.  
Third party registered and unregistered trademarks and logos  
are the property of their respective owners.

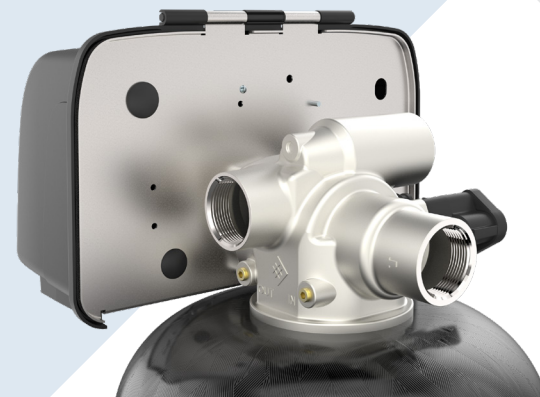
4005272 Rev A JL18



**FLECK**

2815 COMMERCIAL VALVE

**BUILT TO LAST**



**MADE IN THE  
USA**  
OF FOREIGN & DOMESTIC PARTS

PENTAIR FLECK®

# PRODUCT OVERVIEW

The 1-1/2" downflow Pentair Fleck 2815 commercial valve is available with no hard water bypass option, and designed specifically to support many of the current Pentair Fleck timers and controllers.

## ◆ LEAD-FREE CONSTRUCTION

316 stainless steel valve body has higher purity and resistance to corrosion.

## ◆ FLEXIBILITY

Designed to perform on most commercial softener sizes and use the same Pentair powerhead and controller options.

## ◆ EASY SERVICE

Improved piston and seal and spacer cartridge for better service access.

PISTON	BYPASS	NO BYPASS
Continuous (15 psi drop)	70 GPM	70 GPM
Peak (25 psi drop)	90 GPM	90 GPM
CV (flow @ 1 psi drop)	18 GPM	18 GPM
Max Backwash (25 psi drop)	70 GPM	70 GPM

# FEATURES



## INNOVATIVE DESIGN

- ◆ Top hinge cover for easy servicing and storage of tools and replacement parts
- ◆ Hinged drive motor and controller does not need to be removed for servicing piston and seals
- ◆ One piece seal and spacer cartridge for easy installation



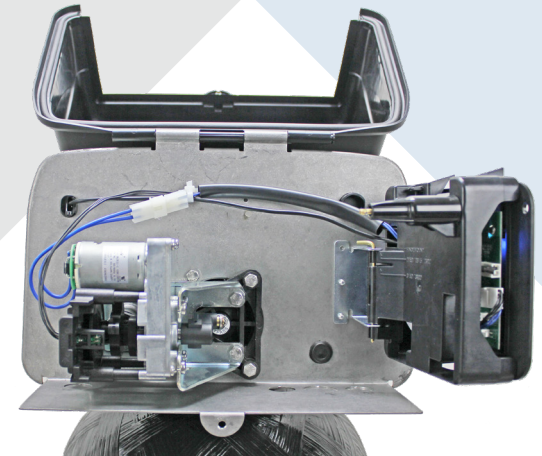
bypass



no bypass

## DURABLE CONSTRUCTION

- ◆ Corrosion resistant stainless steel valve body means the Fleck 2815 can be used in extreme conditions and environments
- ◆ NSF/ANSI Standard 372 certified to meet lead-free regulatory compliance
- ◆ Seals and components are hot water rated up to 150°F, meaning no additional components needed



## PEAK PERFORMANCE

- ◆ Continuous service flow and backwash rates of 70 GPM
- ◆ High backwash capability accommodates tanks up to 36" in diameter and filters up to 30" in diameter (based on 10 GPM/ft²)
- ◆ Hydraulically-balanced composite piston for durable sealing and performance